

CT3031 10x Zoom HD Camera

Technical Specifications

Housing Material:	Titanium Grade 5
Depth Rating:	6000m
Dimensions:	165 x 58mm diameter
Viewport (camera):	Sapphire
Viewport (LED ring):	Cast Acrylic
Weight (in air):	1220g
Weight (in seawater):	771g
Input Voltage:	12-24V DC
Power Consumption:	20W max.
HD Video Output:	HD-SDI or 1Gb IP
HD Video Format:	1920 x 1080p 60/50fps
Sensor/Lens:	CMOS/Auto-focus, f1.8 to f3.4
Field of View:	54°
Optical Zoom:	x10
LED Output:	1500 lumens
LED Dimming Control:	RS232 or RS485
Standard Connector:	BRM06MCX (HD-SDI) MCBH8M (IP)



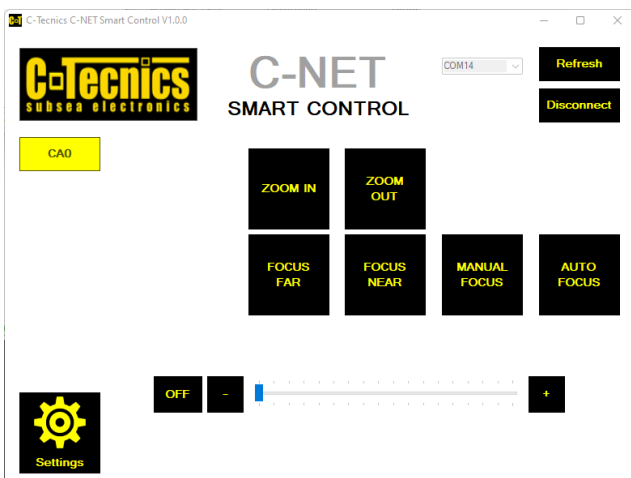
Part No: **CT3031 (HD-SDI)**
CT3031/IP (IP)

Compact, High Definition Subsea Inspection Camera with 10x Zoom

The CT3031 is a compact, colour zoom and focus high definition camera. The 1/3-inch CMOS sensor provides exceptional picture quality with the highest level of resolution. The camera provides a full 1080p HD resolution and incorporates a 10x optical zoom.

The camera has been designed to be as compact as possible but still provide the highest quality of picture for all subsea viewing applications. The standard output signal is HD-SDI but it can also be configured for ethernet-based systems. The integrated LED ring provides 1500 lumens of light output to further enhance the image in poorly lit environments.

The CT3031 is supplied with C-Tecnic's 'C-NET' smart control software for optimised control of the camera zoom, focus and LED functions.



C-NET Control Software (compatible with Windows OS only)

Applications: ROV – Robotics – Marine Scientific