

CT3031 HD 10x Zoom Camera

Technical Specification

Model	CT3031-HDSDI (HD-SDI), CT3031-IP (IP)
Housing	Titanium (Standard)*
Window (Camera)	Sapphire
Window (LED Ring)	Cast acrylic
Depth Rating	6000 m
Dimensions	165 mm (L) x 58 mm (D)
Weight	771 g (water) / 1220 g (air)
Connector	BRM06MCX (HD-SDI), MCBH8M (IP)
Voltage	12–24 VDC
Angle of View	40° (in water) / 54° (in air)
Lens	f1.8 to f3.4
Sensor	1/3 inch CMOS, auto-focus
Power Consumption	20 W max
Video Output	HD-SDI (CT3031-HDSDI) / IP (CT3031-IP)
Video Format	1920 × 1080 at 60 / 50 fps

*Alternative housing materials available on request



Order Code: **CT3031-HDSDI-TI (HD-SDI Output)**
CT3031-IP-TI (IP Output)

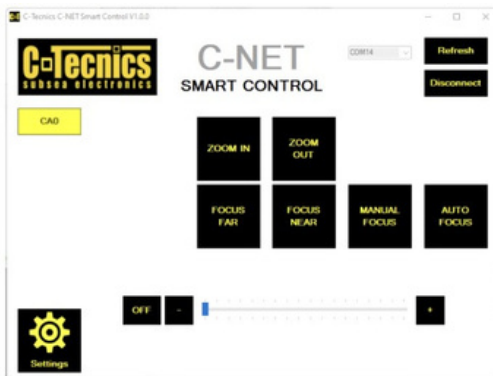
Compact subsea inspection camera with 10x optical zoom and integrated LED lighting

The CT3031 is a compact high-definition subsea colour camera with integrated zoom, focus, and lighting, designed for inspection and observation applications.

Built around a 1/3 inch CMOS sensor, the system delivers full HD image quality with a 10x optical zoom capability. The camera is designed to provide reliable performance in demanding subsea environments while maintaining a compact and robust form factor.

Available in both HD-SDI and IP output configurations, the system can be adapted to suit different integration requirements. An integrated LED ring provides up to 1500 lumens of illumination, enhancing visibility in low-light conditions.

The camera is supplied with C-Tecnic's C-NET control software, allowing optimised control of zoom, focus, and lighting functions.



C-NET Control Software (compatible with Windows OS only)

Applications: ROV, Survey, Marine scientific, Commercial diving

Rev 1.0 | April 2026 | DS-045